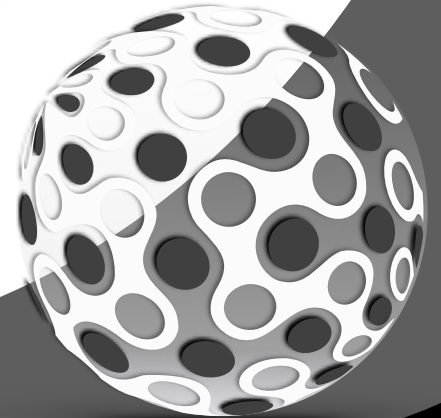


BRITONE

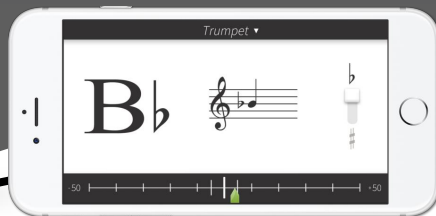
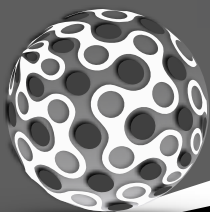
BEGINNING BAND MUSIC BOOK

NAME _____



PART 1

BANDMATE CHROMATIC TUNER
FREE DOWNLOAD!



FREE APP FOR APPLE & ANDROID
www.BandmateTuner.com

BAND KARATE BELT SYSTEM

COMPLETE THE PASS-OFFS & EARN YOUR BELT!

SILVER BELT

#53 Bb Scale | Rhythms 33-40 | #47 "Mary" | #50 "Laughing"

BLACK BELT - ALMOST THERE!

↑6↓6 | Rhythms 25-32 | #42 "Saints" | #45 "Ode"

GREEN BELT

↑5↓5 | Rhythms 21-24 | #35 "Frere" | #39 "Old Mac"

RED BELT - HALFWAY POINT!

16sec. Longtone | ↑4↓4 | Rhythms 17-20 | #27 "Aura" | #32 "Donkey"

PURPLE BELT

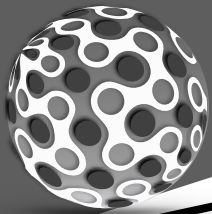
↑3↓3 Notes | Rhythms 9-16 | #19 "Miss Mary" | #23 "Jim Along"

BLUE BELT

12sec. Longtone | Rhythms 5-8 | #14 "Hot Crossed" | #18 "Mary Had"

WHITE BELT

8sec. Longtone | Rhythms 1-4 | #11 "Starlite" | #12 "Rumba"



RHYTHM STUDIES - 2

9 $\frac{4}{4}$

10 $\frac{4}{4}$

11 $\frac{4}{4}$

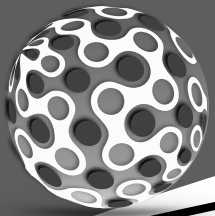
12 $\frac{4}{4}$

13 $\frac{4}{4}$

14 $\frac{4}{4}$

15 $\frac{4}{4}$

16 $\frac{4}{4}$



RHYTHM STUDIES - 3

17 $\frac{4}{4}$

18 $\frac{4}{4}$

19 $\frac{4}{4}$

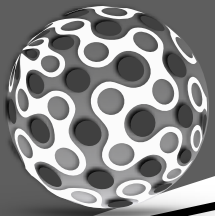
20 $\frac{4}{4}$

21 $\frac{4}{4}$

22 $\frac{4}{4}$

23 $\frac{4}{4}$

24 $\frac{4}{4}$



RHYTHM STUDIES - 4

25 $\frac{4}{4}$

26 $\frac{4}{4}$

27 $\frac{4}{4}$

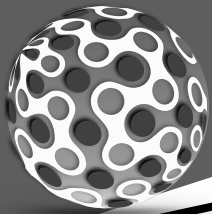
28 $\frac{4}{4}$

29 $\frac{4}{4}$

30 $\frac{4}{4}$

31 $\frac{4}{4}$

32 $\frac{4}{4}$



RHYTHM STUDIES - 5

33 4/4

34 4/4

35 4/4

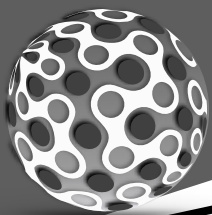
36 4/4

37 4/4

38 4/4

39 4/4

40 4/4



BEGINNING BAND 1ST NOTES

F
(CONCERT F)

○ ○ ○

E_b
(CONCERT E_b)

● ○ ○

D
(CONCERT D)

● ● ○

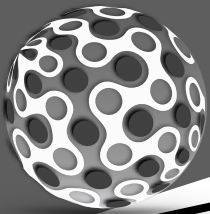
1 THE FIRST NOTE

F

2 A HAIR LOWER

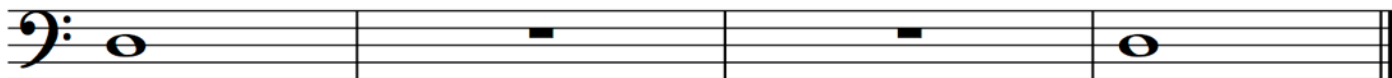
E_b

3 WHICH NOTE IS IT?

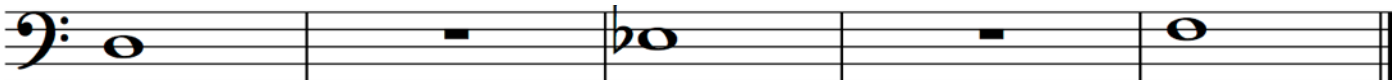
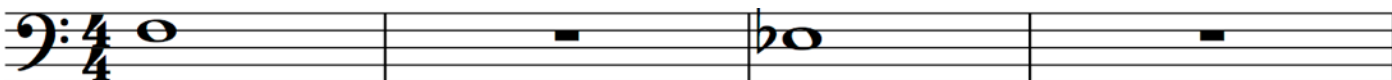


BEGINNING BAND 1ST NOTES

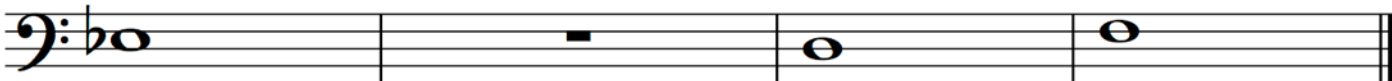
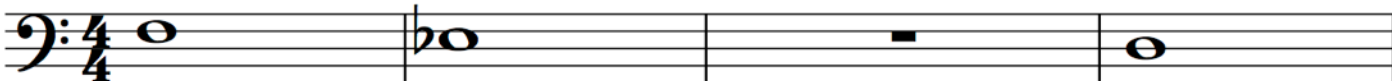
4 3RD NOTE DOWN



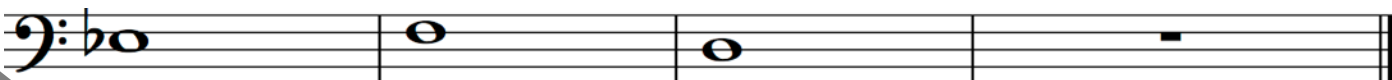
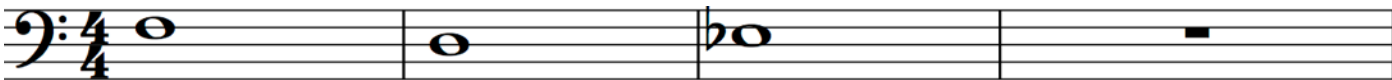
5 DOWN & UP

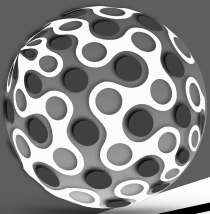


6 DOUBLE UP



7 3 IN THE MIX





BEGINNING BAND 1ST NOTES

F
(CONCERT F)

A single bass clef staff with a whole note on the second line (F). Below the staff are three open circles representing fingerings: 1, 2, and 3.

E_b
(CONCERT E_b)

A single bass clef staff with a whole note on the second line (Eb). Below the staff are three circles representing fingerings: the first is filled (1), the second is open (2), and the third is open (3).

D
(CONCERT D)

A single bass clef staff with a whole note on the second line (D). Below the staff are three circles representing fingerings: the first and second are filled (1, 2), and the third is open (3).

8

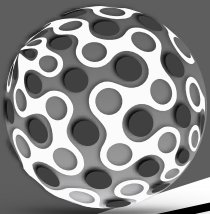
QUARTER ATTACK

Two staves of music in 4/4 time. The first staff starts with a treble clef and a 4/4 time signature, followed by four quarter notes (F, Eb, D, C) and a whole rest. The second staff starts with a bass clef and a key signature of one flat, followed by four quarter notes (B, A, G, F) and a whole rest.

9

DUET DUEL

Two systems of duet notation. Each system has two staves labeled A and B. The first system starts with a treble clef and a key signature of one flat. Staff A has four quarter notes (F, Eb, D, C) and a whole rest. Staff B has a whole rest, followed by two half notes (B, A), and a whole rest. The second system starts with a bass clef and a key signature of one flat. Staff A has four quarter notes (B, A, G, F) and a whole rest. Staff B has a whole rest, followed by two half notes (F, E), and a whole rest.



BEGINNING BAND 1ST NOTES

10 RAIN RAIN, GO AWAY

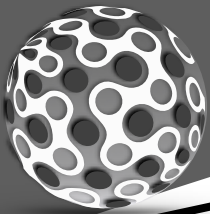


11 STAR-LITE, STAR-BRITE



12 3 NOTE RUMBA





BEGINNING BAND NEXT 2 NOTES

D
(CONCERT D)

● ● ○

C
(CONCERT C)

● ○ ●

Bb
(CONCERT Bb)

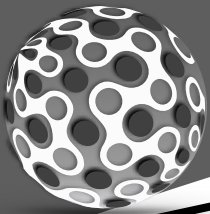
○ ○ ○

13 TWO NOTES LOWER

C Bb

14 HOT CROSSED BUNS

15 AU CLARE DE LA LUNE

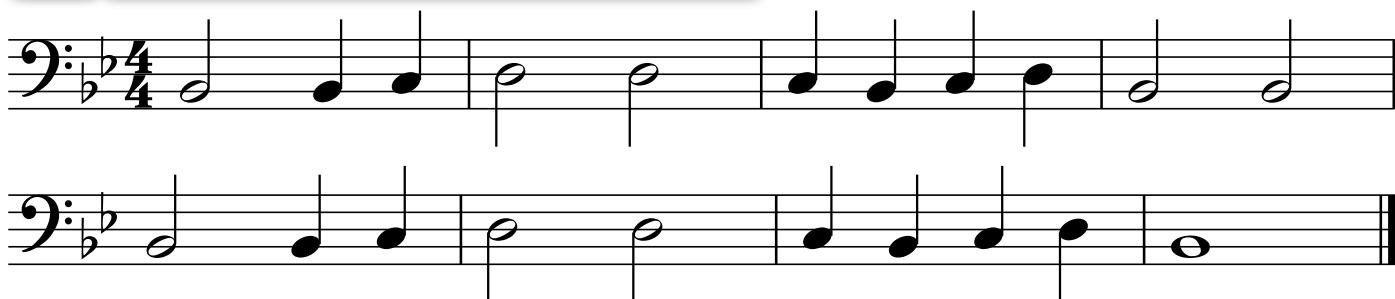


BEGINNING BAND NEXT 2 NOTES

16 GENTLY SLEEP



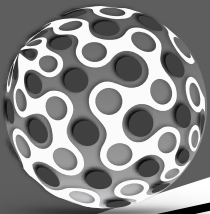
17 DOWN BY THE STATION



18 MARY HAD A LITTLE LAMB



THIS IS WHY WE
CLEAN OUR HORNS!!!



BEGINNING BAND 4 NOTE SONGS

E_b
(CONCERT E_b)

D
(CONCERT D)

C
(CONCERT C)

B_b
(CONCERT B_b)

19 MISS MARY MACK

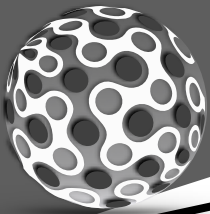
Musical notation for 'Miss Mary Mack' in bass clef, 4/4 time, key of Bb. The melody consists of quarter notes and eighth notes with rests.

20 PEPPERONI PIZZA

Musical notation for 'Pepperoni Pizza' in bass clef, 4/4 time, key of Bb. The melody consists of quarter notes and half notes.

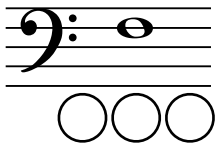
21 NORWEGIAN FOLK SONG

Musical notation for 'Norwegian Folk Song' in bass clef, 4/4 time, key of Bb. The melody consists of quarter notes and half notes.

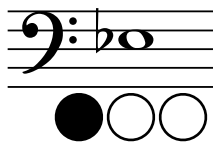


BEGINNING BAND STRIVE FOR FIVE

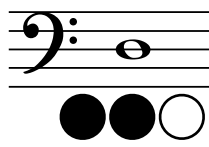
F
(CONCERT F)



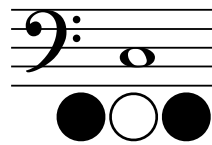
E_b
(CONCERT E_b)



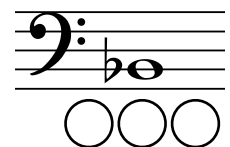
D
(CONCERT D)



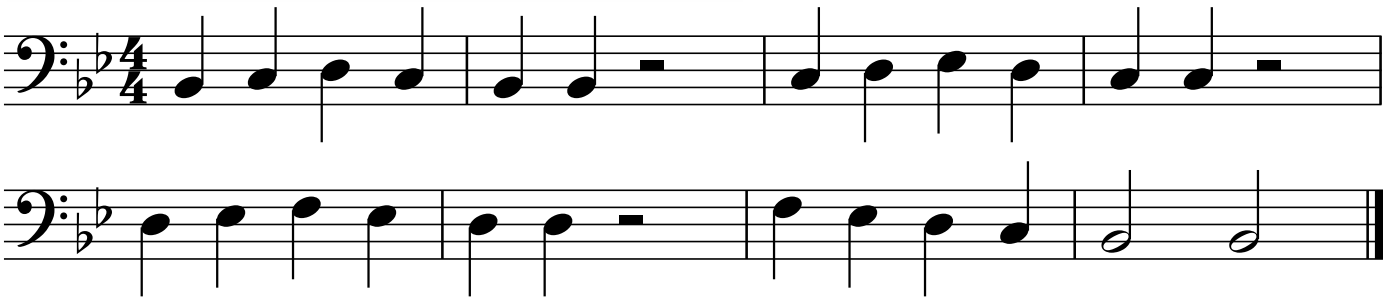
C
(CONCERT C)



B_b
(CONCERT B_b)



22 FIVE NOTE PATTERN

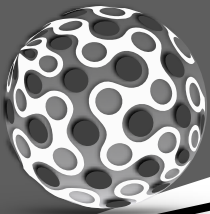


23 JIM ALONG JOSIE



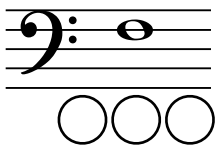
24 GO TELL AUNT RHODIE



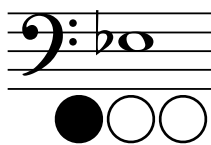


BEGINNING BAND STRIVE FOR FIVE

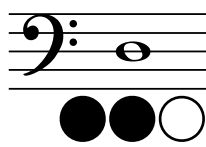
F
(CONCERT F)



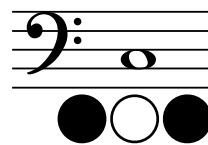
E_b
(CONCERT E_b)



D
(CONCERT D)



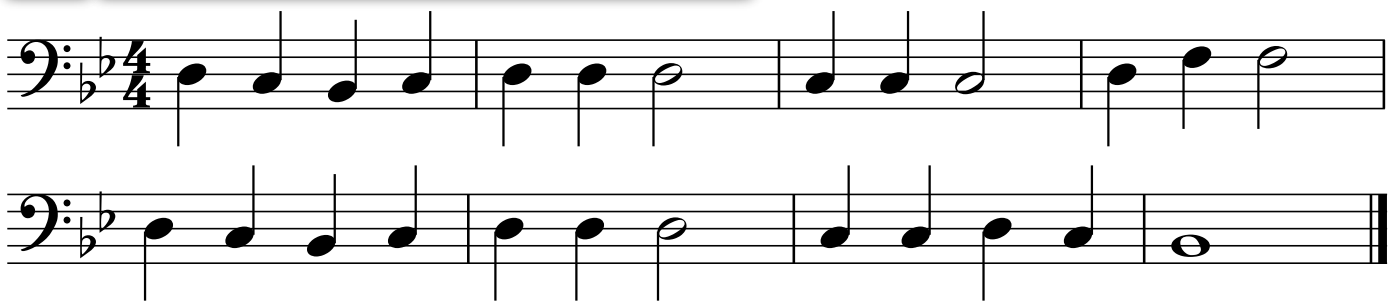
C
(CONCERT C)



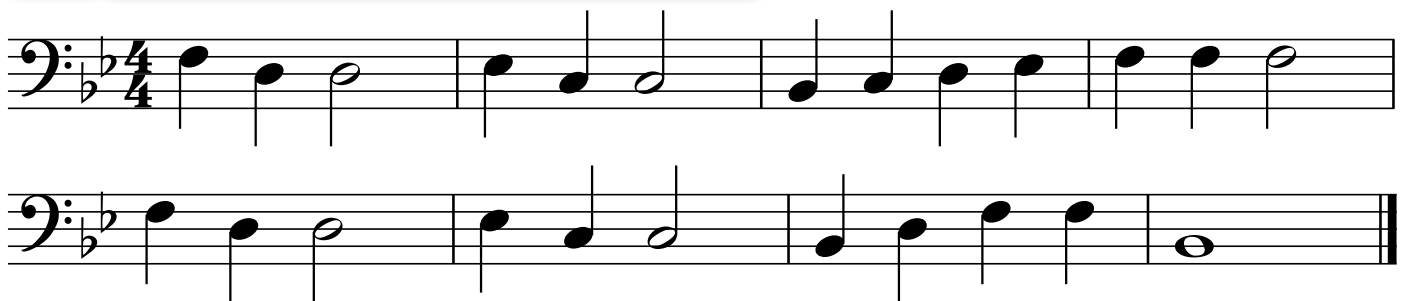
B_b
(CONCERT B_b)



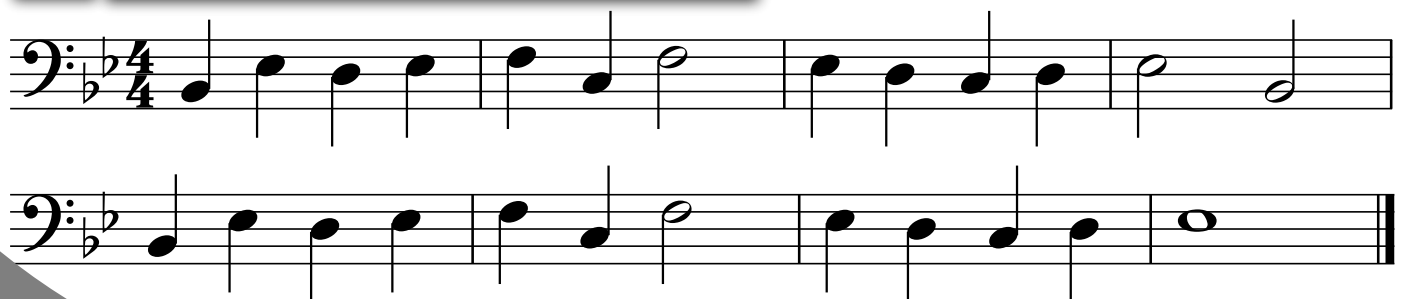
25 MERRILY WE ROLL ALONG

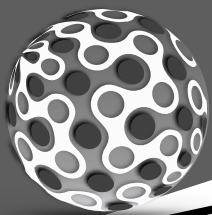


26 LIGHTLY ROW



27 AURA LEE

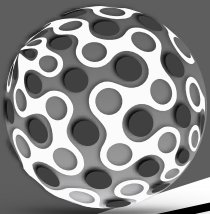




28 JINGLE BELLS

29 REST STOP

30 DREYDL DREYDL



BEGINNING BAND ADD 6 TO THE MIX

G
(CONCERT G)

F
(CONCERT F)

E_b
(CONCERT E_b)

D
(CONCERT D)

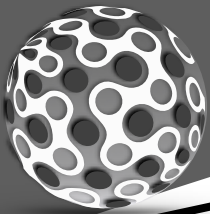
C
(CONCERT C)

B_b
(CONCERT B_b)

34 LONDON BRIDGE

35 FRERE JACQUES

36 MORNING FROM PEER GYNT



BEGINNING BAND ADD 6 TO THE MIX

G
(CONCERT G)

F
(CONCERT F)

E_b
(CONCERT E_b)

D
(CONCERT D)

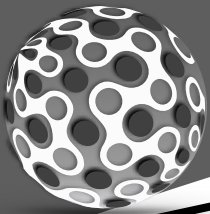
C
(CONCERT C)

B_b
(CONCERT B_b)

37 THIS OLD MAN

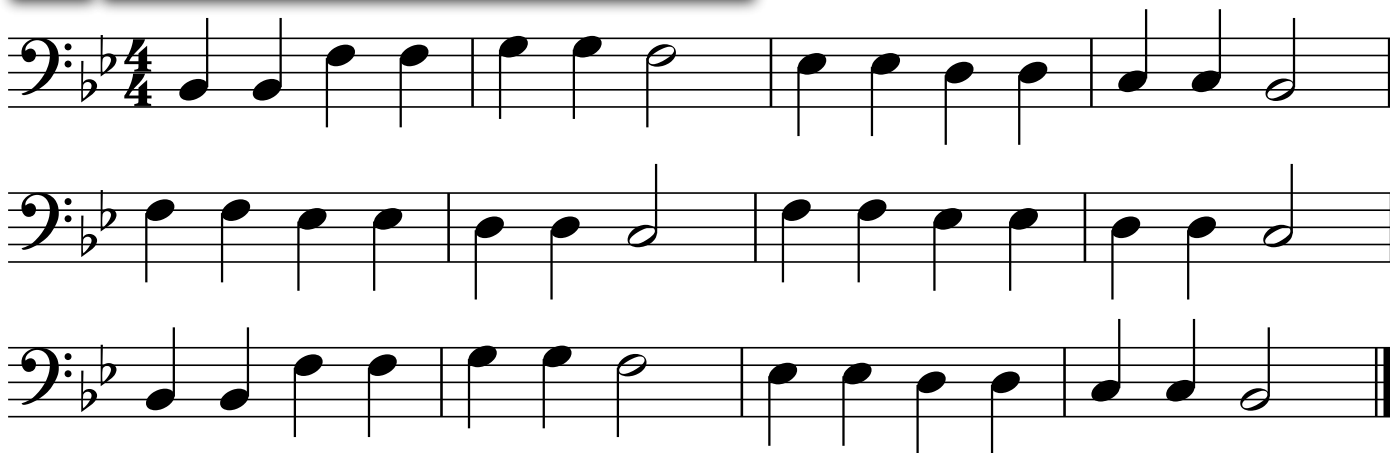
38 THE SNAKE CHARMER

39 OLD MAC DONALD

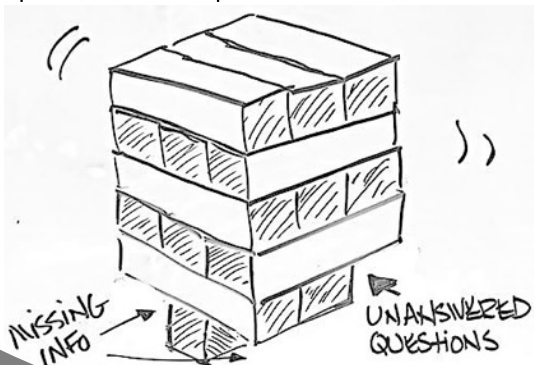


BEGINNING BAND ADD 6 TO THE MIX

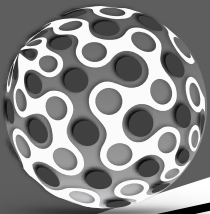
40 TWINKLE TWINKLE LITTLE STAR



41 PEACE LIKE A RIVER



YOU CAN'T BUILD A
BAND WITH MISSING
PIECES...
IT WILL FALL OVER.



BEGINNING BAND ADD 6 TO THE MIX

G
(CONCERT G)

F
(CONCERT F)

E_b
(CONCERT E_b)

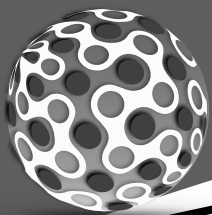
D
(CONCERT D)

C
(CONCERT C)


B_b
(CONCERT B_b)


42 SAINTS GO MARCHING IN

43 TWINKLE WITH A D.C. AL FINE



44 LONDON BRIDGE D.C. AL CODA

To Coda  D.C. al Coda



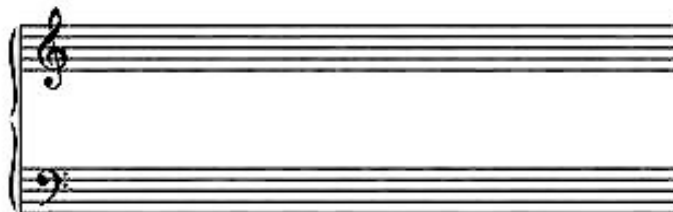
45 ODE TO JOY

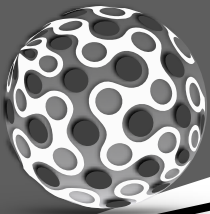


THE SOUND OF SILENCE

Larghestimo

J. S. Zamesnik



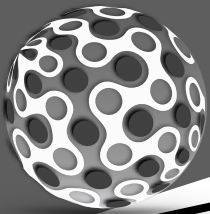


BEGINNING BAND 1 MORE BELOW

F (CONCERT F)	E_b (CONCERT E _b)	D (CONCERT D)	C (CONCERT C)	B_b (CONCERT B _b)	A (CONCERT A)
 ○○○	 ●○○	 ●●○	 ●○○●	 ○○○	 ○○●○

46 DOWN ONE MORE

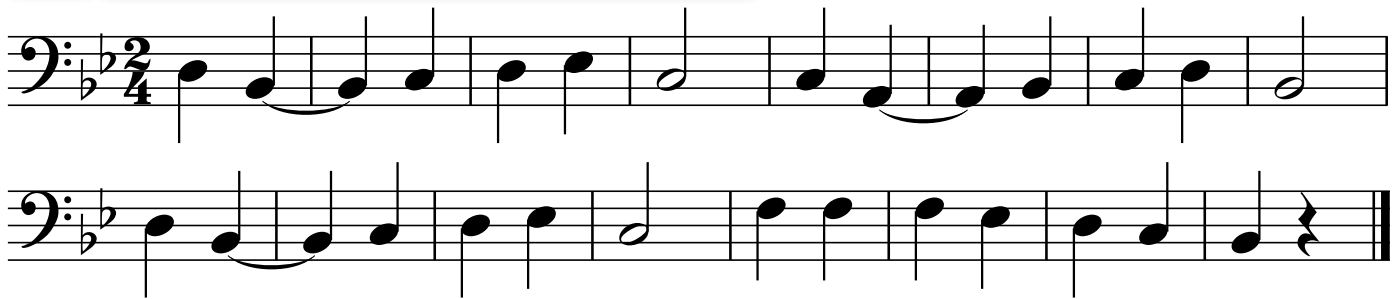
47 MARY ANN



48 POLLY WOLLY DOODLE



49 SHOO, FLY

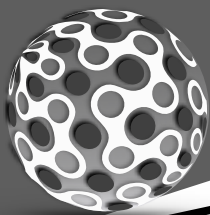


50 LAUGHING SONG



51 7 NOTE PATTERN

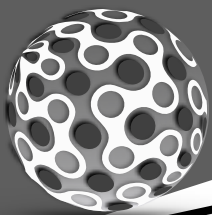




52 FOUR PART LITTLE STAR

Sheet music for the first system of "Four Part Little Star". It consists of four staves labeled A, B, C, and D, all in bass clef with a key signature of one flat (Bb) and a time signature of 2/4. The music is written in a four-part setting.

Staff A: Bass clef, 2/4 time, one flat. Notes: G2, A2, Bb2, C3, D3, E3, F3, G3, A3, Bb3, C4, D4, E4, F4, G4, A4, Bb4, C5, D5, E5, F5, G5, A5, Bb5, C6, D6, E6, F6, G6, A6, Bb6, C7, D7, E7, F7, G7, A7, Bb7, C8, D8, E8, F8, G8, A8, Bb8, C9, D9, E9, F9, G9, A9, Bb9, C10, D10, E10, F10, G10, A10, Bb10, C11, D11, E11, F11, G11, A11, Bb11, C12, D12, E12, F12, G12, A12, Bb12, C13, D13, E13, F13, G13, A13, Bb13, C14, D14, E14, F14, G14, A14, Bb14, C15, D15, E15, F15, G15, A15, Bb15, C16, D16, E16, F16, G16, A16, Bb16, C17, D17, E17, F17, G17, A17, Bb17, C18, D18, E18, F18, G18, A18, Bb18, C19, D19, E19, F19, G19, A19, Bb19, C20, D20, E20, F20, G20, A20, Bb20, C21, D21, E21, F21, G21, A21, Bb21, C22, D22, E22, F22, G22, A22, Bb22, C23, D23, E23, F23, G23, A23, Bb23, C24, D24, E24, F24, G24, A24, Bb24, C25, D25, E25, F25, G25, A25, Bb25, C26, D26, E26, F26, G26, A26, Bb26, C27, D27, E27, F27, G27, A27, Bb27, C28, D28, E28, F28, G28, A28, Bb28, C29, D29, E29, F29, G29, A29, Bb29, C30, D30, E30, F30, G30, A30, Bb30, C31, D31, E31, F31, G31, A31, Bb31, C32, D32, E32, F32, G32, A32, Bb32, C33, D33, E33, F33, G33, A33, Bb33, C34, D34, E34, F34, G34, A34, Bb34, C35, D35, E35, F35, G35, A35, Bb35, C36, D36, E36, F36, G36, A36, Bb36, C37, D37, E37, F37, G37, A37, Bb37, C38, D38, E38, F38, G38, A38, Bb38, C39, D39, E39, F39, G39, A39, Bb39, C40, D40, E40, F40, G40, A40, Bb40, C41, D41, E41, F41, G41, A41, Bb41, C42, D42, E42, F42, G42, A42, Bb42, C43, D43, E43, F43, G43, A43, Bb43, C44, D44, E44, F44, G44, A44, Bb44, C45, D45, E45, F45, G45, A45, Bb45, C46, D46, E46, F46, G46, A46, Bb46, C47, D47, E47, F47, G47, A47, Bb47, C48, D48, E48, F48, G48, A48, Bb48, C49, D49, E49, F49, G49, A49, Bb49, C50, D50, E50, F50, G50, A50, Bb50, C51, D51, E51, F51, G51, A51, Bb51, C52, D52, E52, F52, G52, A52, Bb52, C53, D53, E53, F53, G53, A53, Bb53, C54, D54, E54, F54, G54, A54, Bb54, C55, D55, E55, F55, G55, A55, Bb55, C56, D56, E56, F56, G56, A56, Bb56, C57, D57, E57, F57, G57, A57, Bb57, C58, D58, E58, F58, G58, A58, Bb58, C59, D59, E59, F59, G59, A59, Bb59, C60, D60, E60, F60, G60, A60, Bb60, C61, D61, E61, F61, G61, A61, Bb61, C62, D62, E62, F62, G62, A62, Bb62, C63, D63, E63, F63, G63, A63, Bb63, C64, D64, E64, F64, G64, A64, Bb64, C65, D65, E65, F65, G65, A65, Bb65, C66, D66, E66, F66, G66, A66, Bb66, C67, D67, E67, F67, G67, A67, Bb67, C68, D68, E68, F68, G68, A68, Bb68, C69, D69, E69, F69, G69, A69, Bb69, C70, D70, E70, F70, G70, A70, Bb70, C71, D71, E71, F71, G71, A71, Bb71, C72, D72, E72, F72, G72, A72, Bb72, C73, D73, E73, F73, G73, A73, Bb73, C74, D74, E74, F74, G74, A74, Bb74, C75, D75, E75, F75, G75, A75, Bb75, C76, D76, E76, F76, G76, A76, Bb76, C77, D77, E77, F77, G77, A77, Bb77, C78, D78, E78, F78, G78, A78, Bb78, C79, D79, E79, F79, G79, A79, Bb79, C80, D80, E80, F80, G80, A80, Bb80, C81, D81, E81, F81, G81, A81, Bb81, C82, D82, E82, F82, G82, A82, Bb82, C83, D83, E83, F83, G83, A83, Bb83, C84, D84, E84, F84, G84, A84, Bb84, C85, D85, E85, F85, G85, A85, Bb85, C86, D86, E86, F86, G86, A86, Bb86, C87, D87, E87, F87, G87, A87, Bb87, C88, D88, E88, F88, G88, A88, Bb88, C89, D89, E89, F89, G89, A89, Bb89, C90, D90, E90, F90, G90, A90, Bb90, C91, D91, E91, F91, G91, A91, Bb91, C92, D92, E92, F92, G92, A92, Bb92, C93, D93, E93, F93, G93, A93, Bb93, C94, D94, E94, F94, G94, A94, Bb94, C95, D95, E95, F95, G95, A95, Bb95, C96, D96, E96, F96, G96, A96, Bb96, C97, D97, E97, F97, G97, A97, Bb97, C98, D98, E98, F98, G98, A98, Bb98, C99, D99, E99, F99, G99, A99, Bb99, C100, D100, E100, F100, G100, A100, Bb100, C101, D101, E101, F101, G101, A101, Bb101, C102, D102, E102, F102, G102, A102, Bb102, C103, D103, E103, F103, G103, A103, Bb103, C104, D104, E104, F104, G104, A104, Bb104, C105, D105, E105, F105, G105, A105, Bb105, C106, D106, E106, F106, G106, A106, Bb106, C107, D107, E107, F107, G107, A107, Bb107, C108, D108, E108, F108, G108, A108, Bb108, C109, D109, E109, F109, G109, A109, Bb109, C110, D110, E110, F110, G110, A110, Bb110, C111, D111, E111, F111, G111, A111, Bb111, C112, D112, E112, F112, G112, A112, Bb112, C113, D113, E113, F113, G113, A113, Bb113, C114, D114, E114, F114, G114, A114, Bb114, C115, D115, E115, F115, G115, A115, Bb115, C116, D116, E116, F116, G116, A116, Bb116, C117, D117, E117, F117, G117, A117, Bb117, C118, D118, E118, F118, G118, A118, Bb118, C119, D119, E119, F119, G119, A119, Bb119, C120, D120, E120, F120, G120, A120, Bb120, C121, D121, E121, F121, G121, A121, Bb121, C122, D122, E122, F122, G122, A122, Bb122, C123, D123, E123, F123, G123, A123, Bb123, C124, D124, E124, F124, G124, A124, Bb124, C125, D125, E125, F125, G125, A125, Bb125, C126, D126, E126, F126, G126, A126, Bb126, C127, D127, E127, F127, G127, A127, Bb127, C128, D128, E128, F128, G128, A128, Bb128, C129, D129, E129, F129, G129, A129, Bb129, C130, D130, E130, F130, G130, A130, Bb130, C131, D131, E131, F131, G131, A131, Bb131, C132, D132, E132, F132, G132, A132, Bb132, C133, D133, E133, F133, G133, A133, Bb133, C134, D134, E134, F134, G134, A134, Bb134, C135, D135, E135, F135, G135, A135, Bb135, C136, D136, E136, F136, G136, A136, Bb136, C137, D137, E137, F137, G137, A137, Bb137, C138, D138, E138, F138, G138, A138, Bb138, C139, D139, E139, F139, G139, A139, Bb139, C140, D140, E140, F140, G140, A140, Bb140, C141, D141, E141, F141, G141, A141, Bb141, C142, D142, E142, F142, G142, A142, Bb142, C143, D143, E143, F143, G143, A143, Bb143, C144, D144, E144, F144, G144, A144, Bb144, C145, D145, E145, F145, G145, A145, Bb145, C146, D146, E146, F146, G146, A146, Bb146, C147, D147, E147, F147, G147, A147, Bb147, C148, D148, E148, F148, G148, A148, Bb148, C149, D149, E149, F149, G149, A149, Bb149, C150, D150, E150, F150, G150, A150, Bb150, C151, D151, E151, F151, G151, A151, Bb151, C152, D152, E152, F152, G152, A152, Bb152, C153, D153, E153, F153, G153, A153, Bb153, C154, D154, E154, F154, G154, A154, Bb154, C155, D155, E155, F155, G155, A155, Bb155, C156, D156, E156, F156, G156, A156, Bb156, C157, D157, E157, F157, G157, A157, Bb157, C158, D158, E158, F158, G158, A158, Bb158, C159, D159, E159, F159, G159, A159, Bb159, C160, D160, E160, F160, G160, A160, Bb160, C161, D161, E161, F161, G161, A161, Bb161, C162, D162, E162, F162, G162, A162, Bb162, C163, D163, E163, F163, G163, A163, Bb163, C164, D164, E164, F164, G164, A164, Bb164, C165, D165, E165, F165, G165, A165, Bb165, C166, D166, E166, F166, G166, A166, Bb166, C167, D167, E167, F167, G167, A167, Bb167, C168, D168, E168, F168, G168, A168, Bb168, C169, D169, E169, F169, G169, A169, Bb169, C170, D170, E170, F170, G170, A170, Bb170, C171, D171, E171, F171, G171, A171, Bb171, C172, D172, E172, F172, G172, A172, Bb172, C173, D173, E173, F173, G173, A173, Bb173, C174, D174, E174, F174, G174, A174, Bb174, C175, D175, E175, F175, G175, A175, Bb175, C176, D176, E176, F176, G176, A176, Bb176, C177, D177, E177, F177, G177, A177, Bb177, C178, D178, E178, F178, G178, A178, Bb178, C179, D179, E179, F179, G179, A179, Bb179, C180, D180, E180, F180, G180, A180, Bb180, C181, D181, E181, F181, G181, A181, Bb181, C182, D182, E182, F182, G182, A182, Bb182, C183, D183, E183, F183, G183, A183, Bb183, C184, D184, E184, F184, G184, A184, Bb184, C185, D185, E185, F185, G185, A185, Bb185, C186, D186, E186, F186, G186, A186, Bb186, C187, D187, E187, F187, G187, A187, Bb187, C188, D188, E188, F188, G188, A188, Bb188, C189, D189, E189, F189, G189, A189, Bb189, C190, D190, E190, F190, G190, A190, Bb190, C191, D191, E191, F191, G191, A191, Bb191, C192, D192, E192, F192, G192, A192, Bb192, C193, D193, E193, F193, G193, A193, Bb193, C194, D194, E194, F194, G194, A194, Bb194, C195, D195, E195, F195, G195, A195, Bb195, C196, D196, E196, F196, G196, A196, Bb196, C197, D197, E197, F197, G197, A197, Bb197, C198, D198, E198, F198, G198, A198, Bb198, C199, D199, E199, F199, G199, A199, Bb199, C200, D200, E200, F200, G200, A200, Bb200, C201, D201, E201, F201, G201, A201, Bb201, C202, D202, E202, F202, G202, A202, Bb202, C203, D203, E203, F203, G203, A203, Bb203, C204, D204, E204, F204, G204, A204, Bb204, C205, D205, E205, F205, G205, A205, Bb205, C206, D206, E206, F206, G206, A206, Bb206, C207, D207, E207, F207, G207, A207, Bb207, C208, D208, E208, F208, G208, A208, Bb208, C209, D209, E209, F209, G209, A209, Bb209, C210, D210, E210, F210, G210, A210, Bb210, C211, D211, E211, F211, G211, A211, Bb211, C212, D212, E212, F212, G212, A212, Bb212, C213, D213, E213, F213, G213, A213, Bb213, C214, D214, E214, F214, G214, A214, Bb214, C215, D215, E215, F215, G215, A215, Bb215, C216, D216, E216, F216, G216, A216, Bb216, C217, D217, E217, F217, G217, A217, Bb217, C218, D218, E218, F218, G218, A218, Bb218, C219, D219, E219, F219, G219, A219, Bb219, C220, D220, E220, F220, G220, A220, Bb220, C221, D221, E221, F221, G221, A221, Bb221, C222, D222, E222, F222, G222, A222, Bb222, C223, D223, E223, F223, G223, A223, Bb223, C224, D224, E224, F224, G224, A224, Bb224, C225, D225, E225, F225, G225, A225, Bb225, C226, D226, E226, F226, G226, A226, Bb226, C227, D227, E227, F227, G227, A227, Bb227, C228, D228, E228, F228, G228, A228, Bb228, C229, D229, E229, F229, G229, A229, Bb229, C230, D230, E230, F230, G230, A230, Bb230, C231, D231, E231, F231, G231, A231, Bb231, C232, D232, E232, F232, G232, A232, Bb232, C233, D233, E233, F233, G233, A233, Bb233, C234, D234, E234, F234, G234, A234, Bb234, C235, D235, E235, F235, G235, A235, Bb235, C236, D236, E236, F236, G236, A236, Bb236, C237, D237, E237, F237, G237, A237, Bb237, C238, D238, E238, F238, G238, A238, Bb238, C239, D239, E239, F239, G239, A239, Bb239, C240, D240, E240, F240, G240, A240, Bb240, C241, D241, E241, F241, G241, A241, Bb241, C242, D242, E242, F242, G242, A242, Bb242, C243, D243, E243, F243, G243, A243, Bb243, C244, D244, E244, F244, G244, A244, Bb244, C245, D245, E245, F245, G245, A245, Bb245, C246, D246, E246, F246, G246, A246, Bb246, C247, D247, E247, F247, G247, A247, Bb247, C248, D248, E248, F248, G248, A248, Bb248, C249, D249, E249, F249, G249, A249, Bb249, C250, D250, E250, F250, G250, A250, Bb250, C251, D251, E251, F251, G251, A251, Bb251, C252, D252, E252, F252, G252, A252, Bb252, C253, D253, E253, F253, G253, A253, Bb253, C254, D254, E254, F254, G254, A254, Bb254, C255, D255, E255, F255, G255, A255, Bb255, C256, D256, E256, F256, G256, A256, Bb256, C257, D257, E257, F257, G257, A257, Bb257, C258, D258, E258, F258, G258, A258, Bb258, C259, D259, E259, F259, G259, A259, Bb259, C260, D260, E260, F260, G260, A260, Bb260, C261, D261, E261, F261, G261, A261, Bb261, C262, D262, E262, F262, G262, A262, Bb262, C263, D263, E263, F263, G263, A263, Bb263, C264, D264, E264, F264, G264, A264, Bb264, C265, D265, E265, F265, G265, A265, Bb265, C266, D266, E266, F266, G266, A266, Bb266, C267, D267, E267, F267, G267, A267, Bb267, C268, D268, E268, F268, G268, A268, Bb268, C269, D269, E269, F269, G269, A269, Bb269, C270, D270, E270, F270, G270, A270, Bb270, C271, D271, E271, F271, G271, A271, Bb271, C272, D272, E272, F272, G272, A272, Bb272, C273, D273, E273, F273, G273, A273, Bb273, C274, D274, E274, F274, G274, A274, Bb274, C275, D275, E275, F275, G275, A275, Bb275, C276, D276, E276, F276, G276, A276, Bb276, C277, D277, E277, F277, G277, A277, Bb277, C278, D278, E278, F278, G278, A278, Bb278, C279, D279, E279, F279, G279, A279, Bb279, C280, D280, E280, F280, G280, A280, Bb280, C281, D281, E281, F281, G281, A281, Bb281, C282, D282, E282, F282, G282, A282, Bb282, C283, D283, E283, F283, G283, A283, Bb283, C284, D284, E284, F284, G284, A284, Bb284, C285, D285, E285, F285, G285, A285, Bb285, C286, D286, E286, F286, G286, A286, Bb286, C287, D287, E287, F287, G287, A287, Bb287, C288, D288, E288, F288, G288, A288, Bb288, C289, D289, E289, F289, G289, A289, Bb289, C290, D290, E290, F290, G290, A290, Bb290, C291, D291, E291, F291, G291, A291, Bb291, C292, D292, E292, F292, G292, A292, Bb292, C293, D293, E293, F293, G293, A293, Bb293, C294, D294, E294, F294, G294, A294, Bb294, C295, D295, E295, F295, G295, A295, Bb295, C296, D296, E296, F296, G296, A296, Bb296, C297, D297, E297, F297, G297, A297, Bb297, C298, D298, E298, F298, G298, A298, Bb298, C299, D299, E299, F299, G299, A299, Bb299, C300, D300, E300, F300, G300, A300, Bb300, C301, D301, E301, F301, G301, A301, Bb301, C302, D302, E302, F302, G302, A302, Bb302, C303, D303, E303, F303, G303, A303, Bb303, C304, D304, E304, F304, G304, A304, Bb304, C305, D305, E305, F305, G305, A305, Bb305, C306, D306, E306, F306, G306, A306, Bb306, C307, D307, E307, F307, G307, A307, Bb307, C308, D308, E308, F308, G308, A308, Bb308, C309, D309, E309, F309, G309, A309, Bb309, C310, D310, E310, F310, G310, A310, Bb310, C311, D311, E311, F311, G311, A311, Bb311, C312, D312, E312, F312, G312, A312, Bb312, C313, D313, E313, F313, G313, A313, Bb313, C314, D314, E314, F314, G314, A314, Bb314, C315, D315, E315, F315, G315, A315, Bb315, C316, D316, E316, F316, G316, A316, Bb316, C317, D317, E317, F317, G317, A317, Bb317, C318, D318, E318, F318, G318, A318, Bb318, C319, D319, E319, F319, G319, A319, Bb319, C320, D320, E320, F320, G320, A320, Bb320, C321, D321, E321, F321, G321, A321, Bb321, C322, D322, E322, F322, G322, A322, Bb322, C323, D323, E323, F323, G323, A323, Bb323, C324, D324, E324, F324, G324, A324, Bb324, C325, D325, E325, F325, G325, A325, Bb325, C326, D326, E326, F326, G326, A326, Bb326, C327, D327, E327, F327, G327, A327, Bb327, C328, D328, E328, F328, G328, A328, Bb328, C329, D329, E329, F329, G329, A329, Bb329, C330, D330, E330, F330, G330, A330, Bb330, C331, D331, E331, F331, G331, A331, Bb331, C332, D332, E332, F332, G332, A332, Bb332, C333, D333, E333, F333, G333, A333, Bb333, C334, D334, E334, F334, G334, A334, Bb334, C335, D335, E335, F335, G335, A335, Bb335, C336, D336, E336, F336, G336, A336, Bb336, C337, D337, E337, F337, G337, A337, Bb337, C338, D338, E338, F338, G338, A338, Bb338, C339, D339, E339, F339, G339, A339, Bb339, C340, D340, E340, F340, G340, A340, Bb340, C341, D341, E341, F341, G341, A341, Bb341, C342, D342, E342, F342, G342, A342, Bb342, C343, D343, E343, F343, G343, A343, Bb343, C344, D344, E344, F344, G344, A344, Bb344, C345, D345, E345, F345, G345, A345, Bb345, C346, D346, E346, F346, G346, A346, Bb346, C347, D347, E347, F347, G347, A347, Bb347, C348, D348, E348, F348, G348, A348, Bb348, C349, D349, E349, F349, G349, A349, Bb349, C350, D350, E350, F350, G350, A350, Bb350, C351, D351, E351, F351, G351, A351, Bb351, C352, D352, E352, F352, G352, A352, Bb352, C353, D353, E353, F353, G353, A353, Bb353, C354, D354, E354, F354, G354, A354, Bb354, C355, D355, E355, F355, G355, A355, Bb355, C356, D356, E356, F356, G356, A356, Bb356, C357, D357, E357, F357, G357, A357, Bb357, C358, D358, E358, F358, G358, A358, Bb358, C359, D359, E359, F35



BEGINNING BAND 4 PART SONGS

A

B

C

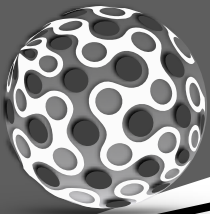
D

A

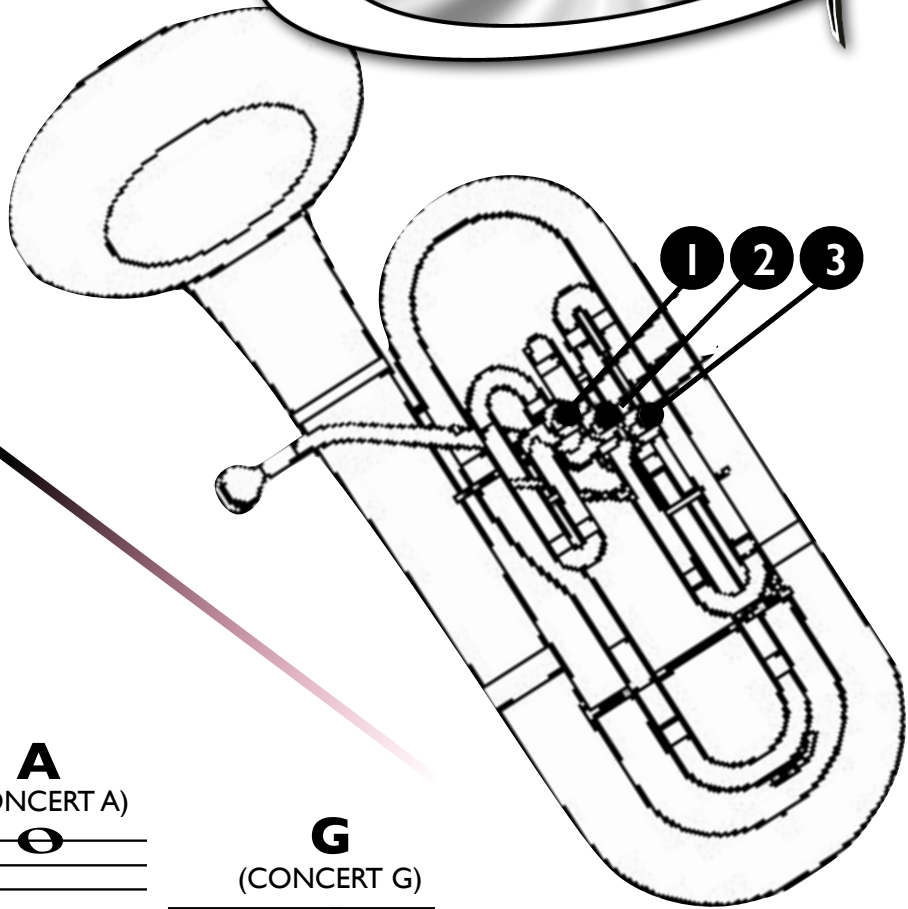
B

C

D



INSTRUMENT FINGERING CHART



Bb
(CONCERT Bb)

A
(CONCERT A)

G
(CONCERT G)

F
(CONCERT F)

Eb
(CONCERT Eb)

D
(CONCERT D)

C
(CONCERT C)

Bb
(CONCERT Bb)

A
(CONCERT A)

GO ONLINE TO WATCH PERFORMANCES

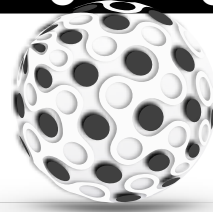
FLUTE

Nina Perlove
Hubert Laws
Dave Valentin
James Galway
Greg Pattillo
Julius Baker
Robert Aitken
Jean-Pierre Rampal
Jeanne Baxtresser
Benny Goodman
Artie Shaw
Woody Herman
Buddy DeFranco
Pete Fountain
David Shifrin
Richard Stoltzman
Julian Bliss
Larry Combs
Stanley Drucker
Thea King
Mitchell Lurie

CLARINET

Branford Marsalis
John Coltrane
Ben Webster
"Fathead" Newman
Harry Carney
Gerry Mulligan
Dana Colley
Ronnie Cuber
Hermann Baumann
Dennis Brain
Dale Clevenger
Philip Farkas
Barry Tuckwell

BARISAX



Joseph Alessi
Wycliffe Gordon
Christian Lindberg
Slide Hampton
Delfeayo Marsalis
Rubin Eubanks
Christian Lindberg
Ralph Sauer

HORN

Steven Mead
Loren Marsteller
Rich Matteson
Brian Bowman
Leonard Falcone

BARITONE

FAMOUS INSTRUMENTALISTS

Tommy Johnson
Roger Bobo
Jim Self
Doug Tournoquist
Sam Pfaffian
Dan Peratoni
Patrick Sheridan
Baadsvik Oystein

TRUMPET

Wynton Marsalis
Arturo Sandoval
Maynard Ferguson
Chris Botti
Bill Chase
Dizzy Gillespie
Wayne Bergeron
Allen Vizzutti
Chuck Mangione
Jens Lindemann

TUBA

Max Roach
Keiko Abe
Vic Firth
Lionel Hampton
Roy Ayers

Gerald Albright
Candy Dulfer
Charlie Parker
"Cannonball" Adderly
Johnny Hodges
Dr. Otis Murphy
Dr. Eugene Rousseau
Dale Underwood
Maceo Parker

ALTO SAX

PERCUSSION